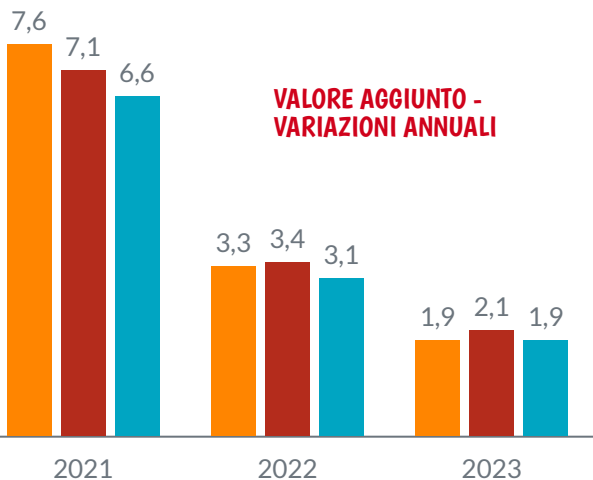


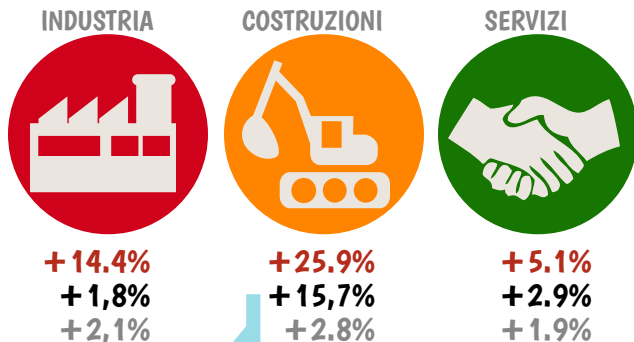
Scenari previsionali

Prometeia, ed. luglio 2022

VALORE AGGIUNTO - VARIAZIONI ANNUALI

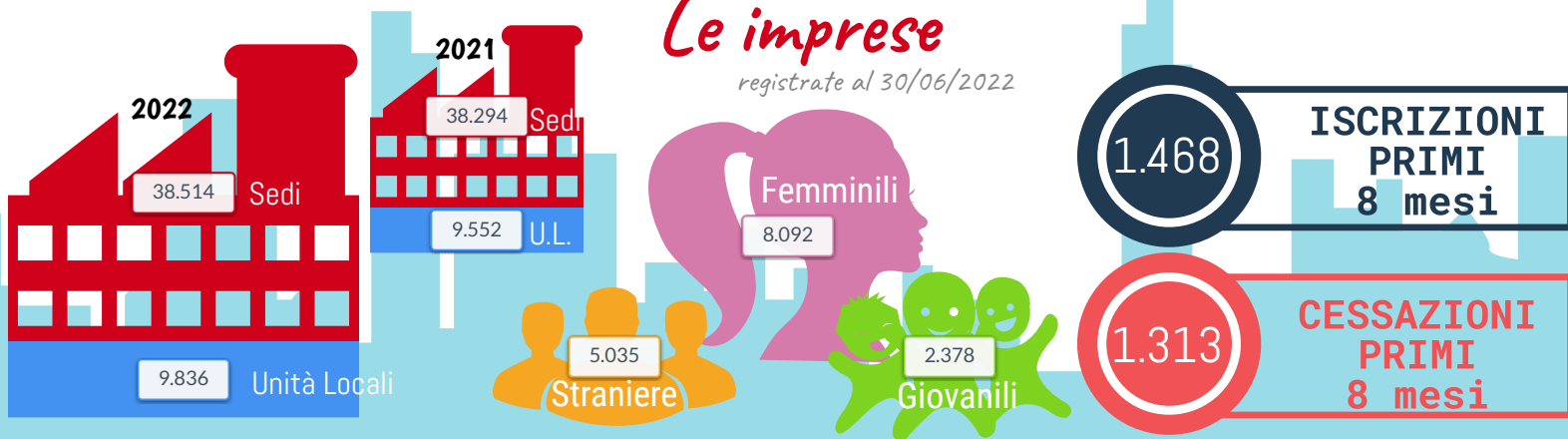


VALORE AGGIUNTO - VARIAZIONI ANNUALI PER SETTORI



Le imprese

registrate al 30/06/2022

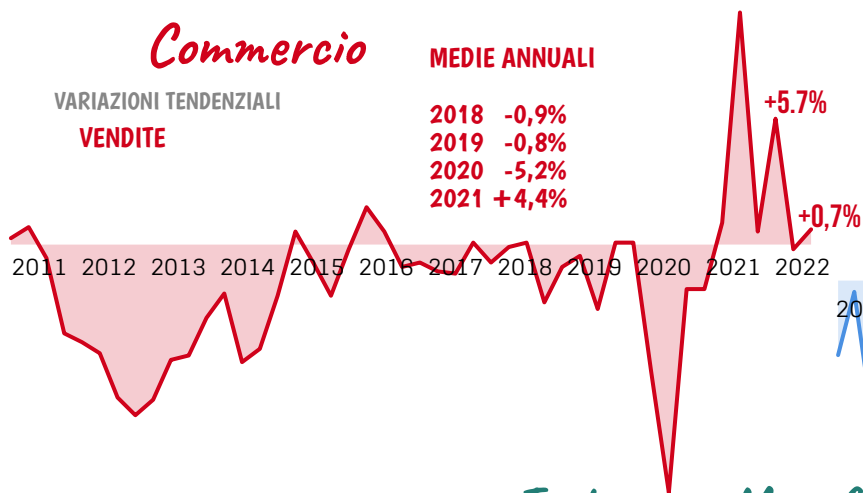


Commercio

MEDIE ANNUALI

VARIAZIONI TENDENZIALI
VENDITE

2018	-0,9%
2019	-0,8%
2020	-5,2%
2021	+4,4%
2022	+0,7%
2023	+5,7%

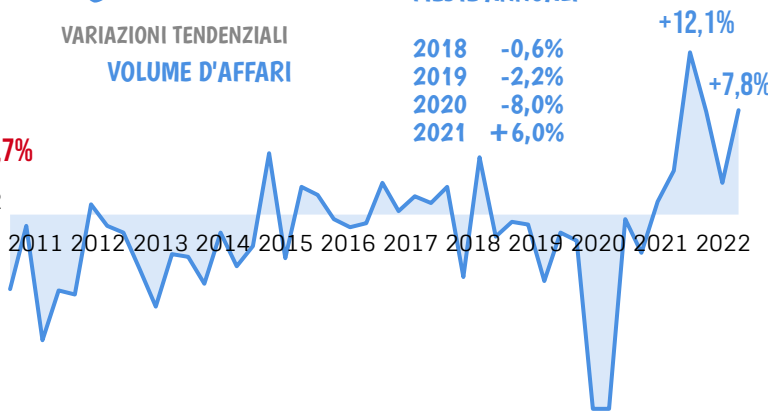


Costruzioni

MEDIE ANNUALI

VARIAZIONI TENDENZIALI
VOLUME D'AFFARI

2018	-0,6%
2019	-2,2%
2020	-8,0%
2021	+6,0%
2022	+7,8%
2023	+12,1%

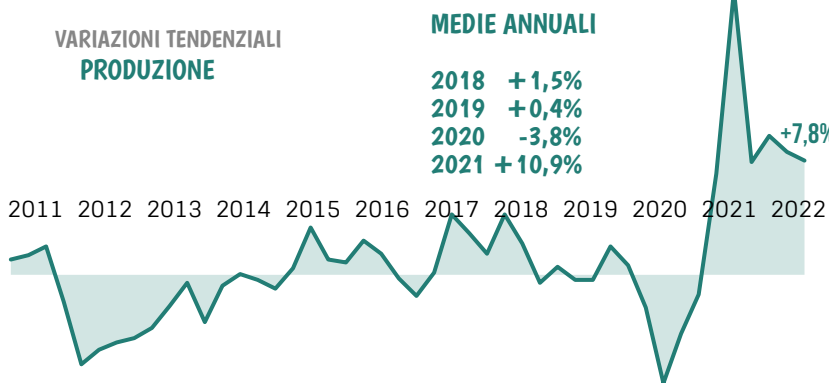


Industria Manifatturiera

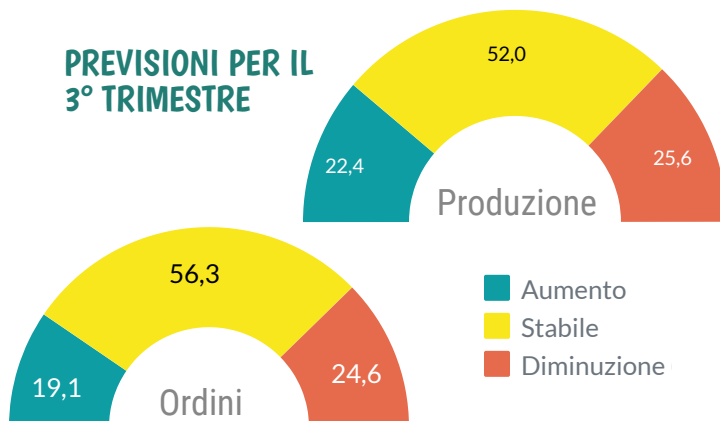
MEDIE ANNUALI

VARIAZIONI TENDENZIALI
PRODUZIONE

2018	+1,5%
2019	+0,4%
2020	-3,8%
2021	+10,9%
2022	+7,8%
2023	+19,5%

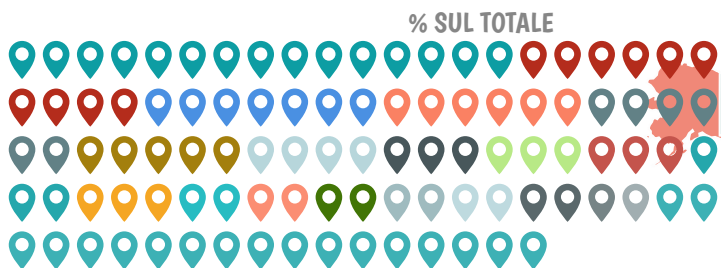


PREVISIONI PER IL 3° TRIMESTRE

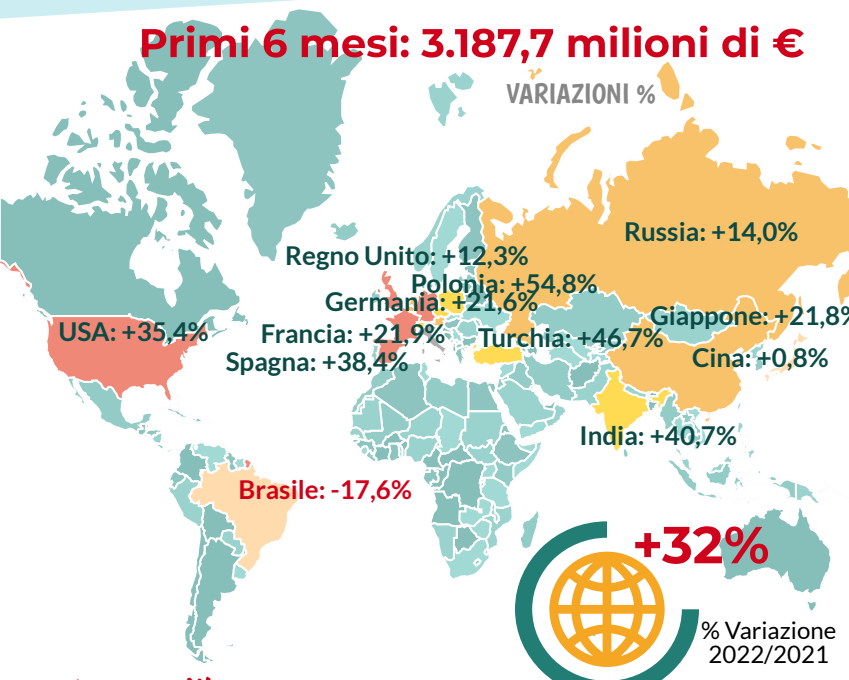


Primi 6 mesi: 3.187,7 milioni di €

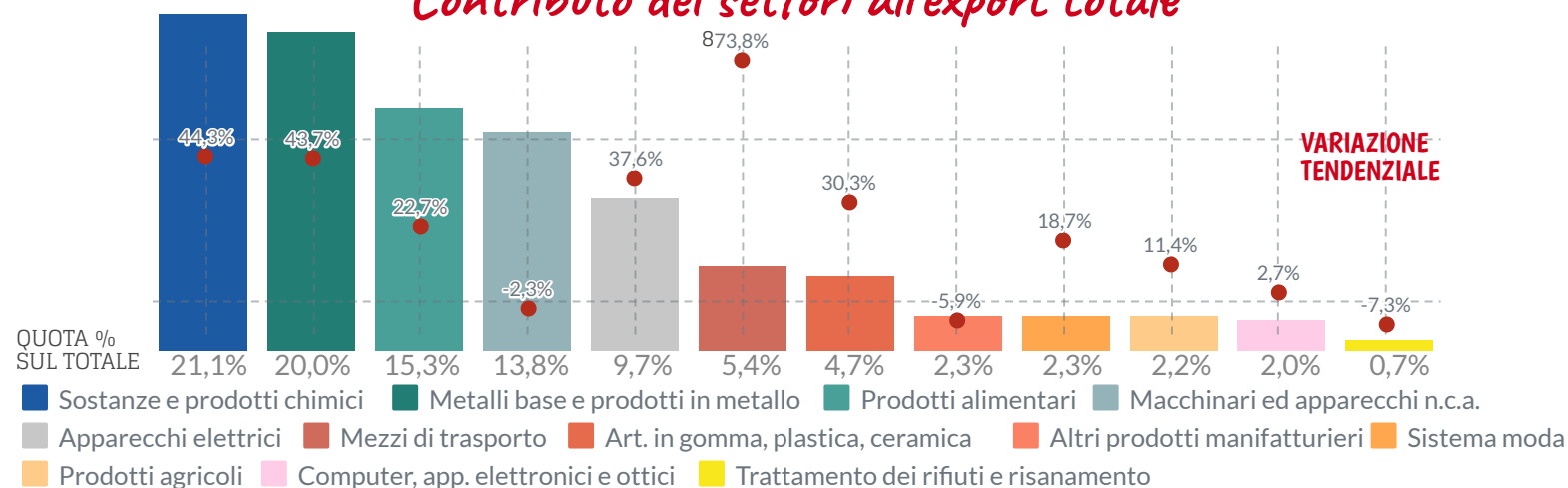
Export ravennate 022



Germania (14.69%)	Francia (9.58%)	Spagna (6.92%)
Polonia (6.02%)	Stati Uniti (5.81%)	Danimarca (5.29%)
Austria (4.35%)	Paesi Bassi (3.02%)	Regno Unito (2.97%)
Belgio (2.95%)	Grecia (2.69%)	Romania (2.6%)
Turchia (2.25%)	Croazia (1.99%)	Repubblica ceca (1.92%)
Svizzera (1.86%)	Slovenia (1.62%)	Ungheria (1.58%)
Russia (1.41%)	Marocco (1.33%)	Altri (19.15%)



Contributo dei settori all'export totale



Investimenti non finanziari per l'acquisto di macchine attrezzature, mezzi di trasporto e prodotti vari

